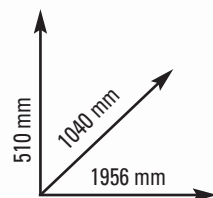
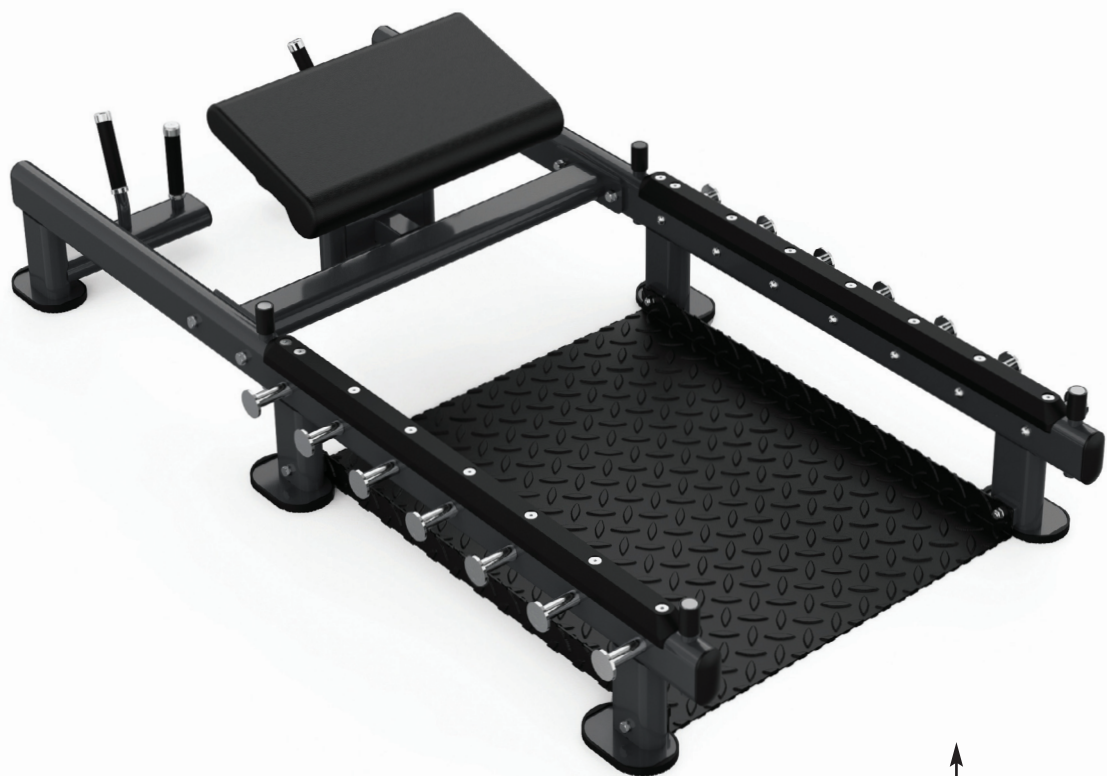


WBX2450

cod.WBX-2450



BENCHES

SUPPORTI BILANCIERI con protezione UHMW
CUSCINO con rivestimento in ecopelle.
Regolabile in altezza su 5 livelli e inclinazione su 4 livelli
PEDANA antiscivolo
DIMENSIONI PRODOTTO: 1956x1040x510 mm
PESO MAX UTILIZZATORE 120 kg
PESO: 102 kg
CLASSE D'UTILIZZO PROFESSIONALE (EN20957-1 / EN957-2 classe S)

BARBELL HOLDERS with UHMW protection pads
BACKREST 600x310x160 mm with eco-leather coating.
Height adjustment on 5-level. Incline adjustment on 4-level
PLATFORM non-slip
SET UP SIZE: 1956x1040x510 mm
MAX USER WEIGHT 120 kg
WEIGHT: 102 kg
COMMERCIAL USE (EN20957-1 / EN957-2 class S)

- Strutturain acciaio rinforzato a sezione ovale 100x50x3 mm
- Verniciatura doppia a polveri epossidiche, antigraffio.
- Structure reinforced steel oval tube 100x50x3 mm
- Painting double heavy duty powder coating painting, scratch-resistant.

