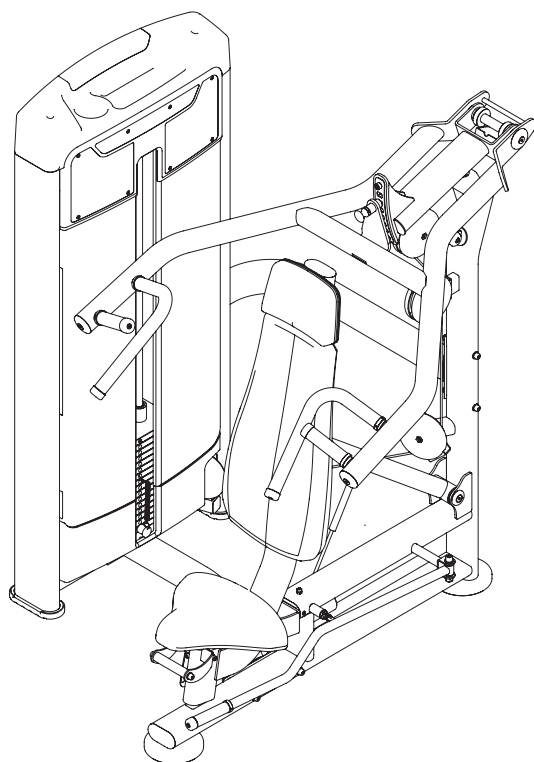


TOORX
PROFESSIONAL LINE

INSTRUCTION



MULTI PRESS

PLX 9200



Cod : GRLDTOORXPLX9200

Rev : 00

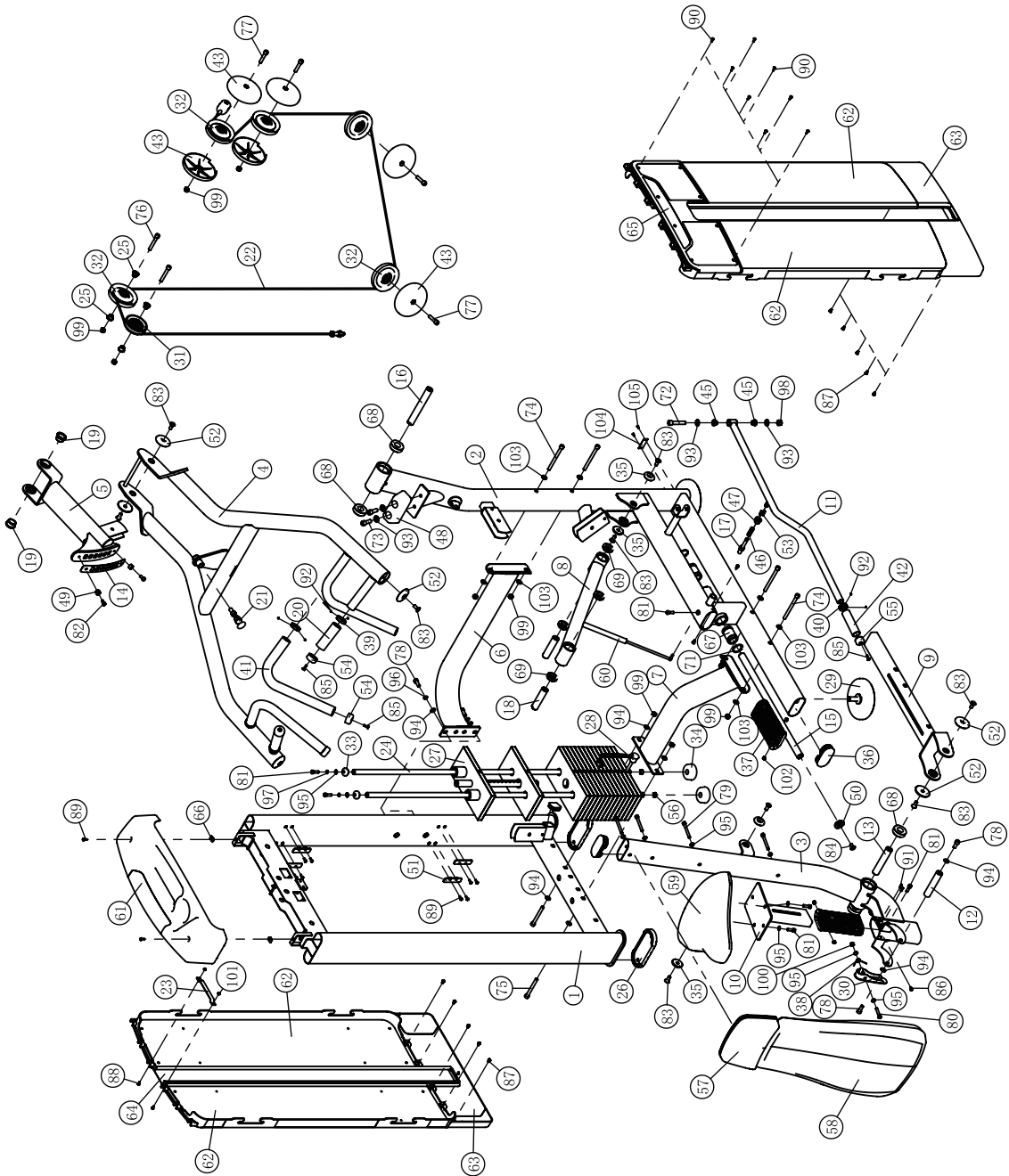
Ed : 11/23

Parts List

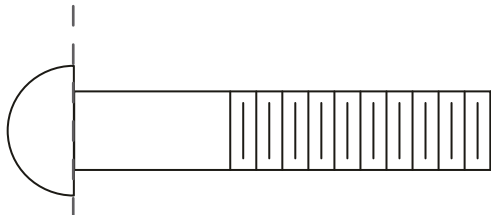
NOTE: SOME OF THESE PARTS MAY COME PRE-INSTALLED.

Item No.	Description	Qty	Item No.	Description	Qty
1	Weight Stack Frame	1	54	Aluminium Cap ϕ 32	4
2	Main Frame	1	55	Aluminium Cap ϕ 25	1
3	Back Bracket	1	56	Rubber Plug ϕ 18.5 \times ϕ 15 \times 12	2
4	Handle Frame	1	57	Head Pad	1
5	Pulley Bracket	1	58	Back Pad	1
6	Rear Cross Brace	1	59	Seat Pad	1
7	Bottom Cross Brace	1	60	Gas Spring	1
8	Rotating Frame	1	61	Top Shroud	1
9	Sliding Rack	1	62	Side Shroud	4
10	Cushion Slide Rack	1	63	Lower Shroud	2
11	Long Handle Rack	1	64	Back Fastener	1
12	Handle Bars	1	65	Front Shroud ASSY	1
13	Shaft ϕ 25 \times 132	1	66	Stretch Splint	2
14	Scratch Guard	1	67	Linear Motion Bearing	2
15	Guide Rod	1	68	Bearing 6005-2Z	4
16	Shaft ϕ 25 \times 187.5	1	69	Bearing 61905-2Z	4
17	Latch Shaft	1	70	Flat Head Hex Riveted Nut M5 \times 13	16
18	Shaft ϕ 25 \times 102	2	71	Elastic Retainer For The Hole	2
19	Bushing ϕ 38 \times ϕ 25.4 \times 18	2	72	Hex Socket Head Bolt M12 \times 65	1
20	Hand Gloves	2	73	Hex Socket Head Bolt M12 \times 35	2
21	Pop Pin	1	74	Hex Socket Head Bolt M10 \times 120	4
22	Cable ASSY	1	75	Hex Socket Head Bolt M10 \times 90	2
23	Connecting Plate	1	76	Hex Socket Head Bolt M10 \times 70	2
24	Guid Rod	2	77	Hex Socket Head Bolt M10 \times 50	4
25	Spacer Bush	4	78	Hex Socket Head Bolt M10 \times 25	4
26	Foot Cover	2	79	Hex Socket Head Bolt M8 \times 75	4
27	Top Plate	1	80	Hex Socket Head Bolt M8 \times 45	1
28	Selector Pin W/Coil	1	81	Hex Socket Head Bolt M8 \times 25	6
29	Support Pad	2	82	Hex Socket Head Bolt M8 \times 15	2
30	Adjusting Handle	1	83	Hex Drive Flat Head Screw M10 \times 25	10
31	3.5" Pulley	1	84	Hex Drive Flat Head Screw M10 \times 20	1
32	4.5" Pulley	5	85	Hex Drive Flat Head Screw M6 \times 20	5
33	Rubber Sleeve	2	86	Button Head Cap Screw M6 \times 12	4
34	Rubber Bumper	2	87	Button Head Cap Screw M6 \times 10	12
35	Aluminum End Cap ϕ 43 \times ϕ 10.5 \times 8	4	88	Button Head Cap Screw M5 \times 10	2
36	Plug PT50 \times 100	2	89	Cross Recess Pan Head Screw M5 \times 15	18
37	Plastic Tube Guide	4	90	Philips Countersunk Head Screw M5 \times 15	8
38	Twist Spring	1	91	Socket Set Screw M6 \times 16	2
39	Aluminum Ring ϕ 40 \times ϕ 33 \times 9.5	4	92	Socket Set Screw M5 \times 3	10
40	Aluminum Ring ϕ 33 \times ϕ 26.8 \times 9.5	1	93	Flat Washer ϕ 13.5 \times ϕ 24 \times 2.5	4
41	Grip ST ϕ 36 \times ϕ 28 \times 460	2	94	Flat Washer ϕ 11 \times ϕ 20 \times 2	8
42	Grip ST ϕ 30 \times ϕ 22 \times 120	1	95	Flat Washer ϕ 9 \times ϕ 16 \times 1.6	10
43	4.5" Pulley Cover	6	96	Spring Washer ϕ 10	2
44	Plug F38	1	97	Spring Washer ϕ 8	2
45	Bushing	2	98	Nylon Lock Nut M12	1
46	Spring	1	99	Nylon Lock Nut M10	10
47	Lock Nut	1	100	Nylon Lock Nut M8	1
48	Rubber Bumper	1	101	Nylon Lock Nut M5	10
49	Limit Sleeve	2	102	Lock Nut M6	4
50	End Cap ϕ 38 \times 6	1	103	Arc Washer ϕ 10	8
51	Fixed Mount	8	104	Serial Number Nameplate	1
52	Aluminum End Cap	6	105	Blind Rivet ϕ 4 \times 8	2
53	Chain Buckle	1			

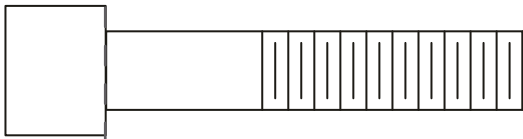
Exploded View



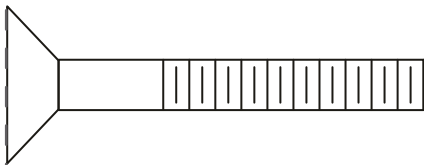
Measurement Guide



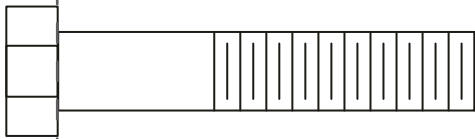
BHCS = Button Head Cap Screw



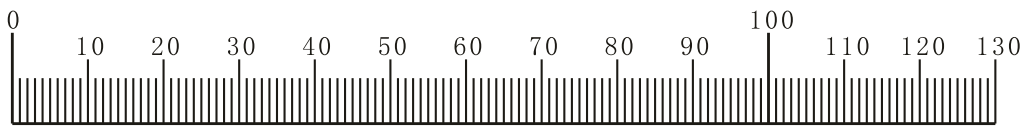
SHCS = Socket Head Cap Screw



FHCS = Flat Head Cap Screw



HHB = Hex Head Bolt



Millimeters



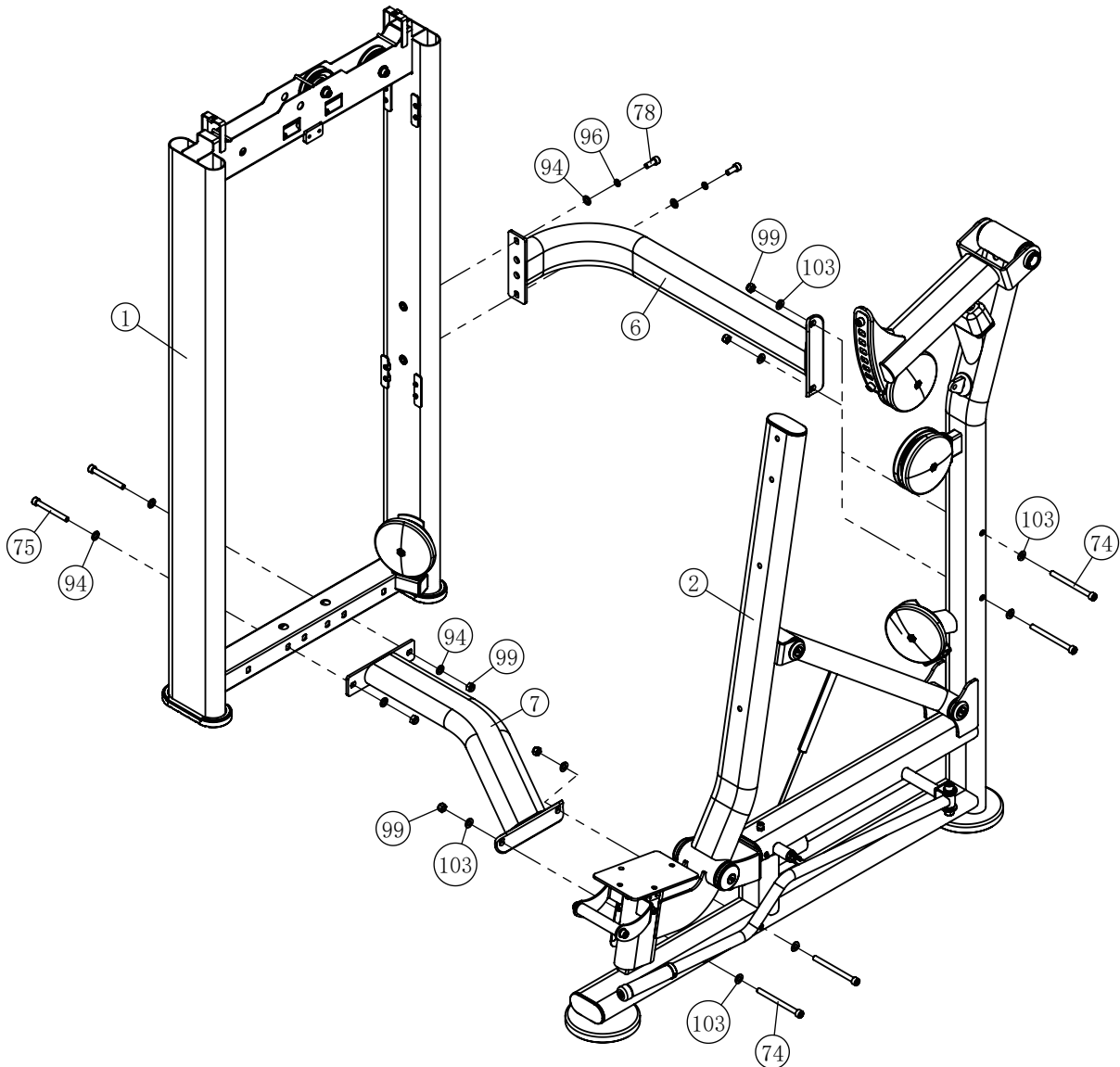
Inches

Assembly

STEP 1

Note: Hand Tighten Bolts and Nylon Lock Nuts.

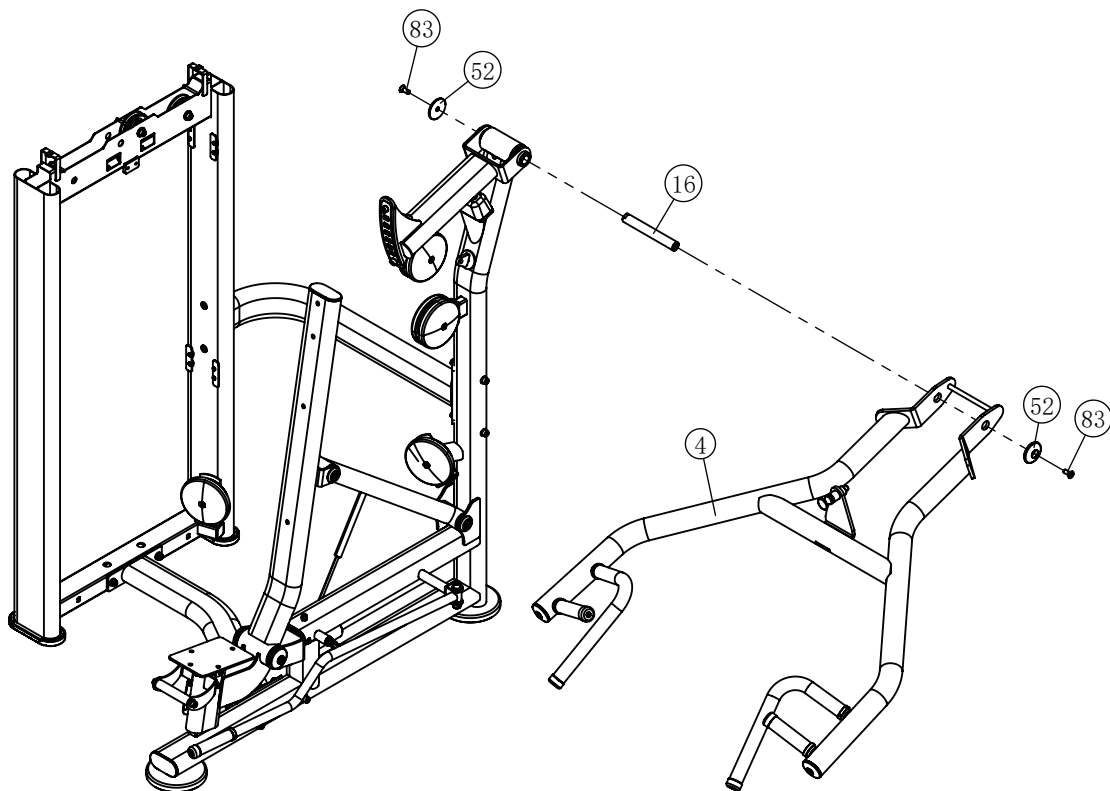
Item No.	Description	Qty	Item No.	Description	Qty
1	Weight Stack Frame	1	78	Hex Socket Head Bolt M10×25	2
2	Main Frame	1	94	Flat Washer $\phi 11 \times \phi 20 \times 2$	4
6	Rear Cross Brace	1	96	Spring Washer $\phi 10$	2
7	Bottom Cross Brace	1	99	Nylon Lock Nut M10	6
74	Hex Socket Head Bolt M10×120	4	103	Arc Washer $\phi 10$	8
75	Hex Socket Head Bolt M10×90	2			



Assembly

STEP 2

Item No.	Description	Qty
4	Handle Frame	1
16	Shaft $\phi 25 \times 187.5$	1
52	Aluminium Grip Cap $\phi 32.5 \times \phi 26 \times 19$	2
83	Hex Drive Flat Head Screw M10 \times 25	2

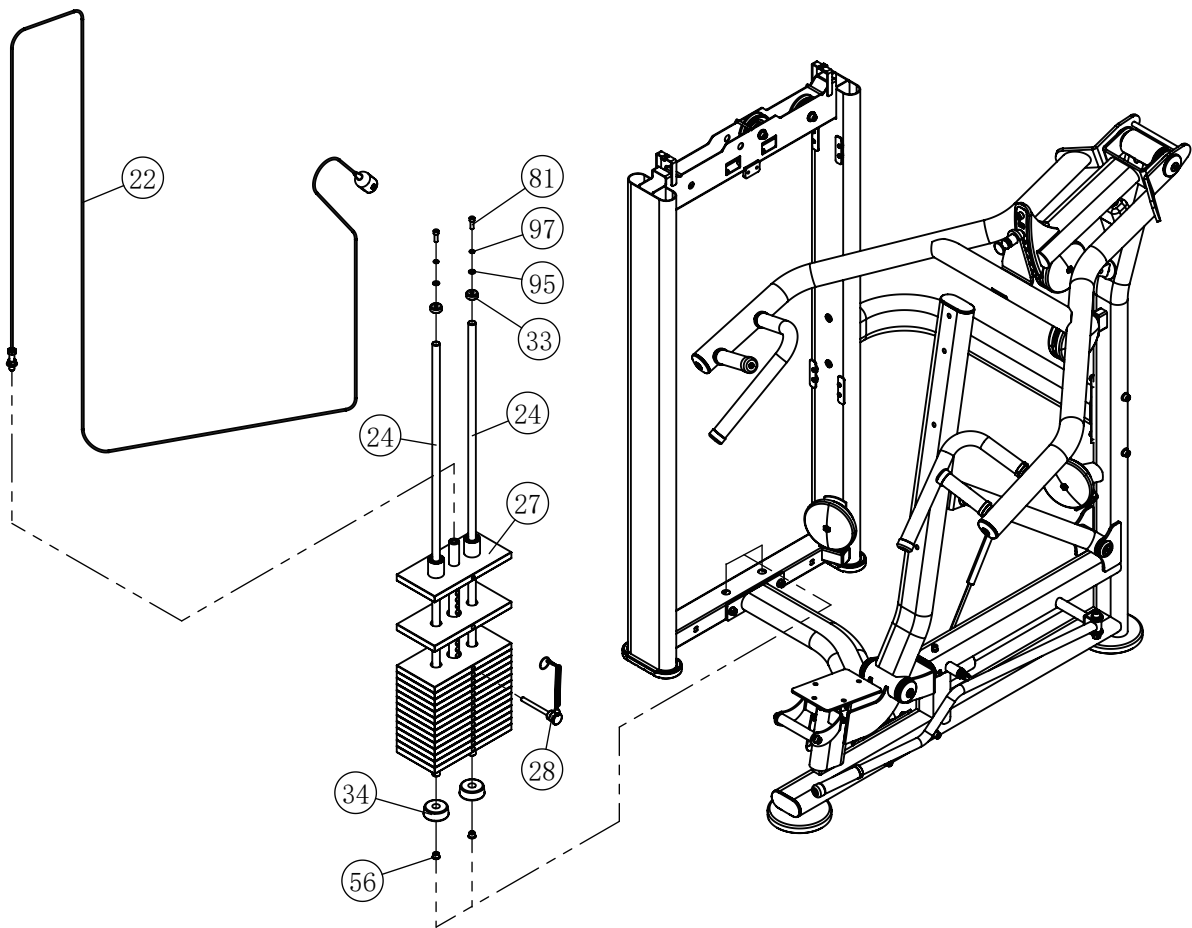


Assembly

STEP 3

Note: Hand Tighten Bolts and Nylon Lock Nuts.

Item No.	Description	Qty	Item No.	Description	Qty
22	Cable ASSY	1	56	Rubber Plug	2
24	Guide Rod	2	81	Hex Socket Head Bolt M8×25	2
27	Top Plate	1	95	Flat Washer φ9×φ16×1.6	2
33	Mount Sleeve	2	97	Spring Washer φ8	2
34	Weight Rubber Bumper	2			

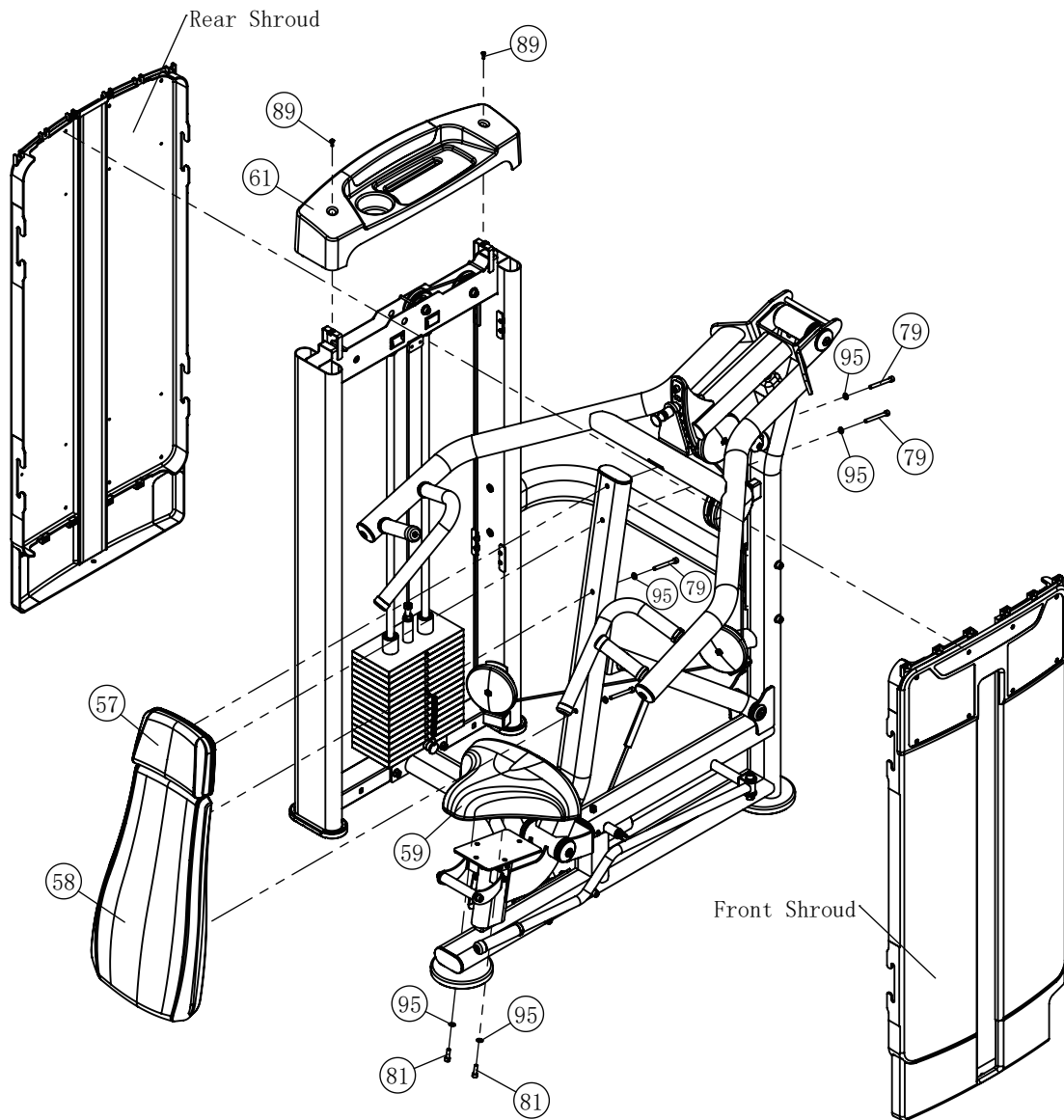


Assembly

STEP 4

Note: Wrench Tighten Screws.

Item No.	Description	Qty	Item No.	Description	Qty
57	Head Pad	1	79	Hex Socket Head Bolt M8×75	4
58	Back Pad	1	81	Hex Socket Head Bolt M8×25	2
59	Seat Pad	1	89	Cross Pan Head Screw M5×15	2
61	Top Shroud	1	95	Flat Washer φ9×φ16×1.6	6



General Maintenance Information

Links, Pull-Pins, Snap Hooks, Swivels, Weight Stack Pins:

- * Check all pieces for signs of visible wear or damage.
- * Check springs in snap hooks and pull-pins for proper tension and alignment.
- * If the spring sticks or has lost its rigidity, replace it immediately.

Upholstery:

- * To ensure prolonged upholstery life and proper hygiene, all upholstered pads should be wiped down with a damp cloth after every workout.
- * Periodically take the time to use a mild soap or an approved vinyl upholstery cleaner to deter the onset of cracking or drying. Avoid using any abrasive cleaners or cleaners not intended for use on vinyl.
- * Replace ripped or worn upholstery immediately.
- * Keep sharp or pointed objects clear of all upholstery.

Decals:

- * Inspect and familiarize yourself with any safety warnings or other user information posted on each decal.

Nuts and Bolts:

- * Inspect all nuts and bolts for any loosening and tighten if needed.
- * Go through a re-tightening sequence periodically to ensure that all hardware is tensioned proper.

Anti-Skid Surfaces:

- * These surfaces are designed to supply secure footing and need to be replaced if they appear worn or become slippery.

Belts and Cables:

- * We use only high quality belt, and mil-spec cables.
- * Visually inspect the belts and cables for fraying, cracking, peeling or discoloration.
- * While the machine is not in use, carefully run your fingers along the belt or cable to feel for thinning or bulging areas.
- * Replace belts and cables immediately at the first signs of damage or wear. Do not use equipment until belts or cables have been replaced.

Belt and Cable Tension:

- * Referring to the Owners Manual, when belts or cables are used check all bolts attachments to be sure they are properly attached.
- * Check slack in cables and re-adjust cable tension if needed.

Seat Sleeves, Guide Rods:

- * Wipe down adjusting tubes with a dust free rag before applying lubricant.
- * Lubricate seat sleeves and Guide Rods with a Silicon or Teflon based lubricant spray.

Linear Bearings:

- * Referring to the Owners Manual carefully disassemble the bearing from its housing and place a finger full of light grease (lithium, super lube, etc.) into the inside of the bearing. Using your finger, press the grease into the ball-bearings and their tracks. Repeat until the ball-bearing tracks are full of grease. Insert the shaft back into the bearing and wipe off excess grease.

PLEASE KEEP THIS FOR YOUR RECORDS



GARLANDO SPA
Via Regione Piemonte, 32 - Zona Industriale D1
15068 - Pozzolo Formigaro (AL) - Italy
contact@toorxprofessional.it
www.toorxprofessional.it