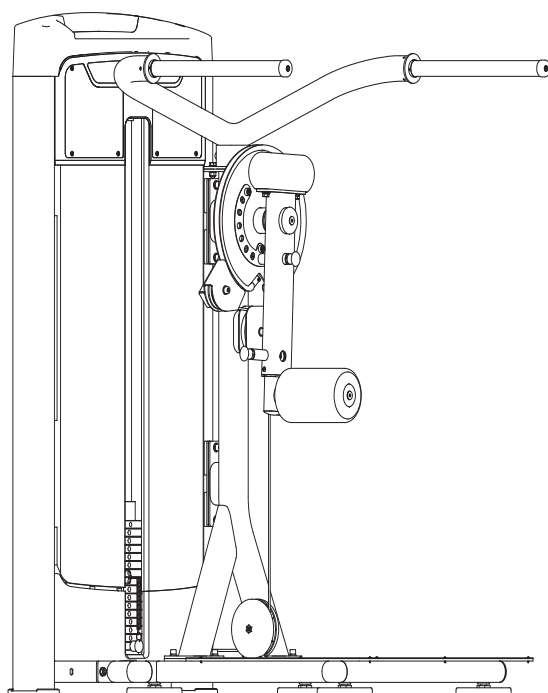


**TOORX**  
PROFESSIONAL LINE

# INSTRUCTION



**MULTI HIP**

# PLX 9100



Cod : GRLDTOORXPLX9100

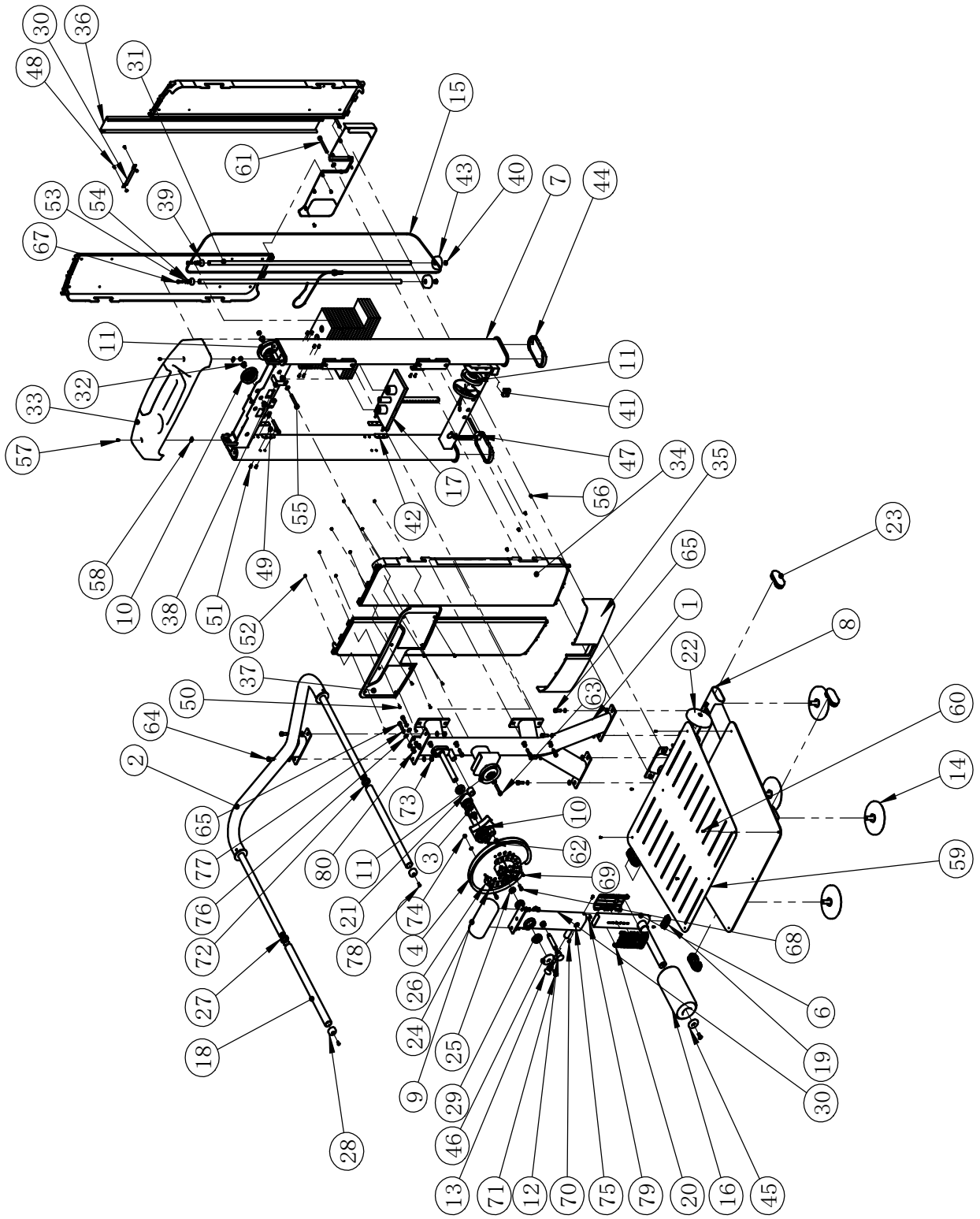
Rev : 00

Ed : 11/23

## Exploded View and Parts List

Item NO.	Description	Qty	Item NO.	Description	Qty
1	Main stand	1	41	Plug F38	1
2	Handle	1	42	Shroud Hanger	8
3	Rope pulley frame	1	43	Rubber Bumper	2
4	reverse rack	1	44	Foot Cover	2
5	swing frame	1	45	Aluminum end cover	1
6	FOAM rack	1	46	Aluminum end cover	1
7	U-shape frame	1	47	Select Iron Pin Group	1
8	Floor mounted frame	1	48	Cross Pan Head Screw M5×10	2
9	clump weight	1	49	Cross Recess Pan Head Screw M5×15	16
10	Small pulley	2	50	Flat Head Cap Screw M5×13	8
11	Large pulley	4	51	Flat headed hexagonal rivet nut M5×13	16
12	Pin combination	1	52	Nylon Lock Nut M5	10
13	Elastic bolt assembly	1	53	Spring Washer $\phi 8$	2
14	Floor mounted frame	4	54	Flat Washer $\phi 9 \times \phi 16 \times 1.6$	5
15	Steel cable assembly	1	55	Socket Head Cap Screw M10×70	2
16	FOAM assembly	1	56	Cross Pan Head Screw M6×10	12
17	Counterweight iron components	1	57	Cross Recess Pan Head Screw M5×10	2
18	Put gloves on	2	58	M5 Top Plate	2
19	Pipe plug	1	59	skid plate	1
20	Hollow pipe sleeve	2	60	Mushroom head break mandrel blind rivets $\phi 4 \times 8$	6
21	stop collar	2	61	Socket Head Cap Screw M10×90	2
22	Large pulley cover	3	62	Socket Head Cap Screw M10×85	1
23	Large elliptical pipe plug	4	63	Socket Head Cap Screw M10×50	1
24	stop collar	3	64	Hex Head Bolt M10×30	4
25	RING	2	65	Socket Head Cap Screw M10×30	10
26	Lining plate	1	66	Socket Head Cap Screw M10×50	2
27	$\phi 32$ aluminum retaining ring	2	67	Socket Head Cap Screw M8×25	3
28	$\phi 32$ aluminum head	2	68	Socket Head Cap Screw M8×20	3
29	deep groove ball bearing	6	69	Socket Head Cap Screw M4×15	1
30	Connecting plate	1	70	Cross Pan Head Screw M6×12	2
31	Guide Rod	2	71	Flat Head Cap Screw M10×25	2
32	Bushing	4	72	Socket Screw M5×3	4
33	Top Shroud	1	73	Nylon Lock Nut M10	8
34	Side Shroud	4	74	Nylon Lock Nut M8	3
35	Bottom Shroud	2	75	Hex Nut M6	2
36	Rear buckle	1	76	Flat Washer $\phi 11 \times \phi 20 \times 2$	25
37	Rear Shroud	2	77	Spring Washer $\phi 10$	12
38	Pulley baffle	1	78	Flat Head Cap Screw M6×16	2
39	Fixing Sleeve	2	79	Socket Screw M6×16	2
40	Rubber Bumper	2	80	Flat headed hexagonal rivet nut M10×19.5	2

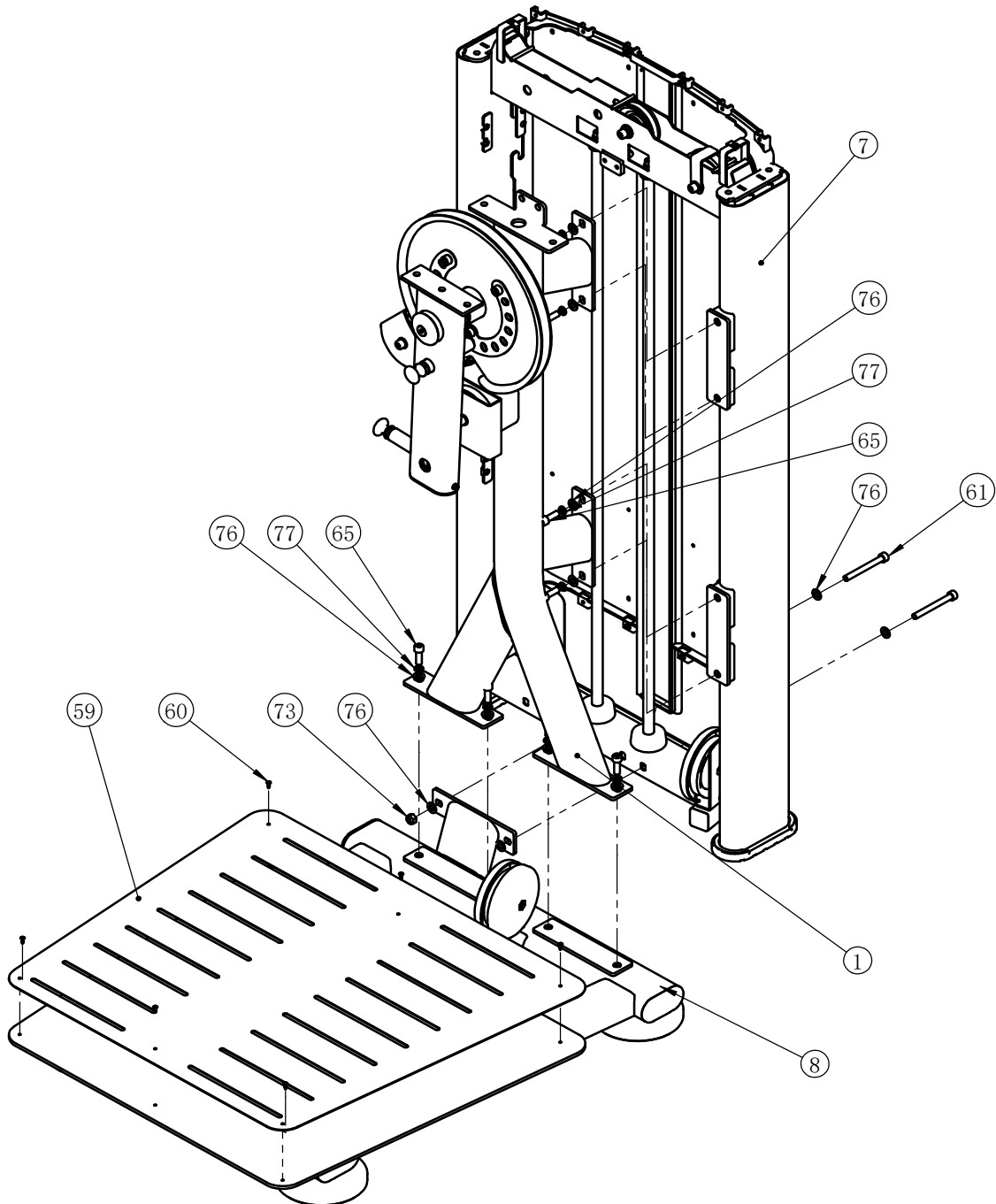
# Exploded View and Parts List



# Assembly

## STEP 1

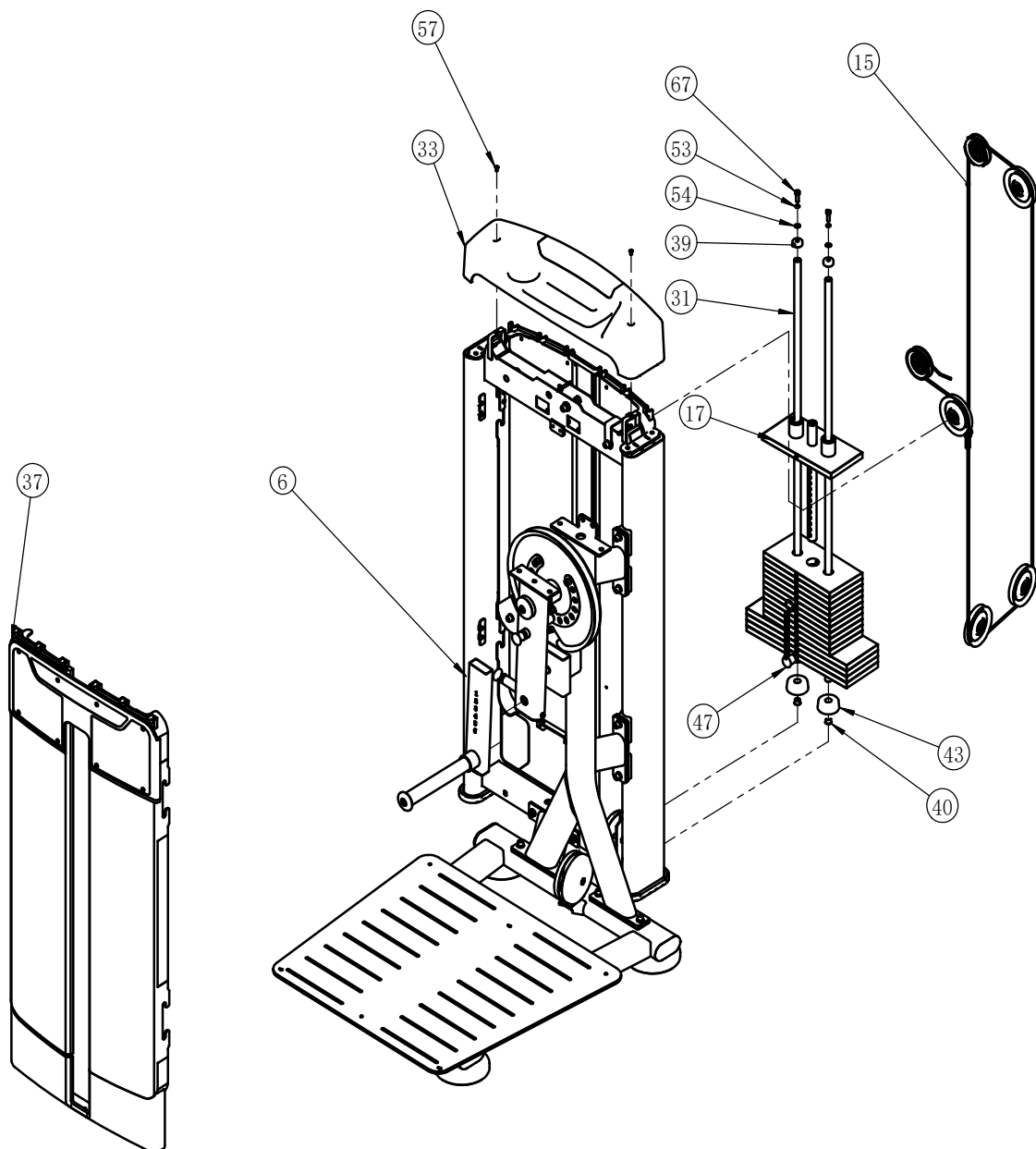
Item No.	Description	Qty	Item No.	Description	Qty
1	Main stand	1	7	U-shape frame	1
8	Floor mounted frame	1	59	skid plate	1
60	Mushroom head break mandrel blind rivets $\phi 4 \times 8$	6	61	Socket Head Cap Screw M10 $\times 90$	2
65	Socket Head Cap Screw M10 $\times 30$	10	73	Nylon Lock Nut M10	8
76	Flat Washer $\phi 11 \times \phi 20 \times 2$	25	77	Spring Washer $\phi 10$	12



# Assembly

## STEP 2

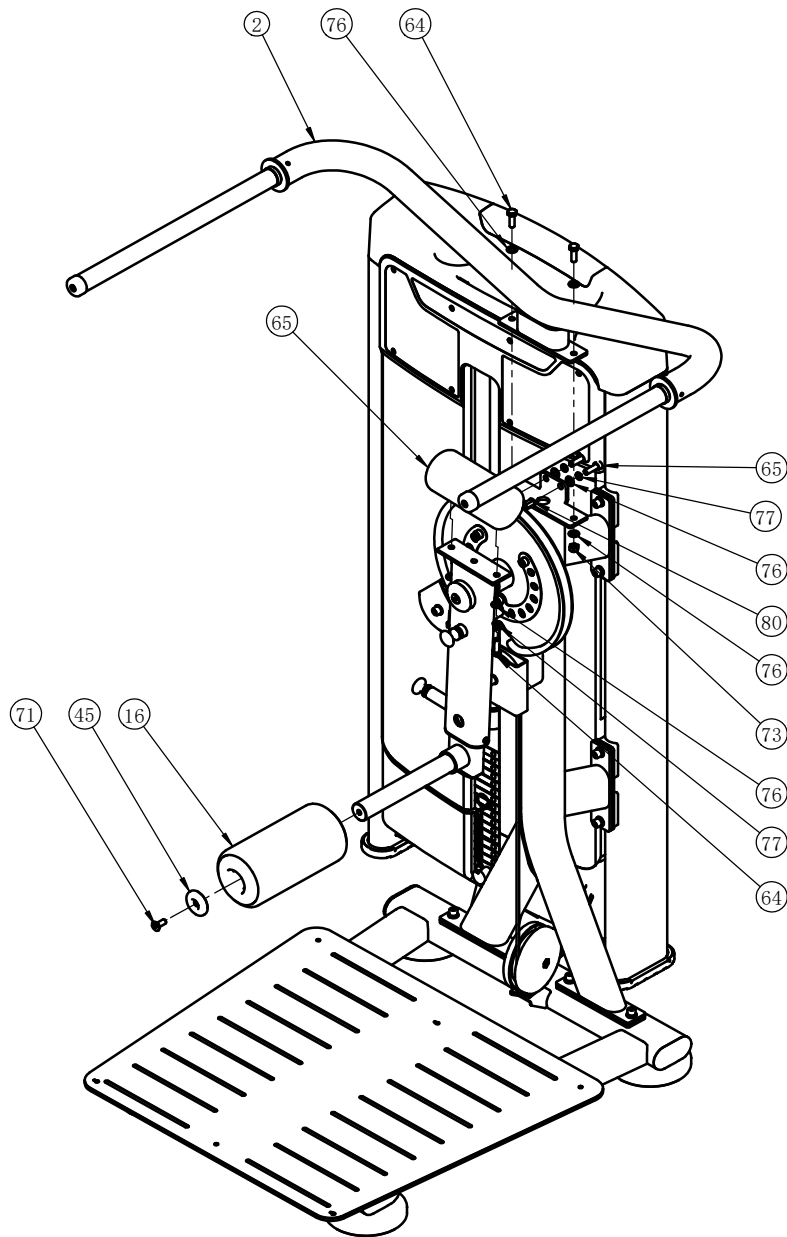
Item No.	Description	Qty	Item No.	Description	Qty
6	FOAM rack	1	15	Steel cable assembly	1
17	Counterweight iron components	1	31	Guide Rod	2
33	Top Shroud	1	37	Rear Shroud	2
39	Fixing Sleeve	2	40	Rubber Bumper	2
43	Rubber Bumper	2	47	Select Iron Pin Group	1
53	Spring Washer $\phi 8$	2	54	Flat Washer $\phi 9 \times \phi 16 \times 1.6$	5
57	Cross Recess Pan Head Screw M5 $\times$ 10	2	67	Socket Head Cap Screw M8 $\times$ 25	3



# Assembly

## STEP 3

Item No.	Description	Qty	Item No.	Description	Qty
2	Handle	1	16	FOAM assembly	1
45	Aluminum end cover	1	64	Hex Head Bolt M10×30	4
65	Socket Head Cap Screw M10×30	10	71	Flat Head Cap Screw M10×25	2
73	Nylon Lock Nut M10	8	76	Flat Washer φ11×φ20×2	25
77	Spring Washer φ10	12	80	Flat headed hexagonal rivet nut M10×19.5	2





GARLANDO SPA  
Via Regione Piemonte, 32 - Zona Industriale D1  
15068 - Pozzolo Formigaro (AL) - Italy  
[contact@toorxprofessional.it](mailto:contact@toorxprofessional.it)  
[www.toorxprofessional.it](http://www.toorxprofessional.it)